



Lamin B2 mouse mAb

Catalog No	YP-Ab-04516
Isotype	IgG
Reactivity	Human;Mouse
Applications	WB
Gene Name	Lamin B2
Protein Name	
Immunogen	Recombinant human Lamin B2 protein.
Specificity	This antibody detects endogenous levels of Lamin B2 and does not cross-react with related proteins.
Formulation	Liquid in PBS containing 50% glycerol, 0.5% BSA and 0.02% sodium azide.
Source	Monoclonal, Mouse
Purification	The antibody was affinity-purified from mouse ascites by affinity-chromatography using epitope-specific immunogen.
Dilution	wb dilution 1:500
Concentration	1 mg/ml
Purity	≥90%
Storage Stability	-20°C/1 year
Synonyms	LAMB 2; LAMB2; Lamin-B2; LMN 2; LMN B2; LMN2; LMNB 2; LMNB2; LMNB2_HUMAN; MGC2721; RGD1563803.
Observed Band	68kD
Cell Pathway	Nucleus lamina .
Tissue Specificity	Epithelium,Fetal brain cortex,Muscle,
Function	disease:Defects in LMNB2 are a cause of partial acquired lipodystrophy (APL) [MIM:608709]; also called Barraquer-Simons syndrome. APL is a rare childhood disease characterized by loss of subcutaneous fat from the face and trunk. Fat deposition on the pelvic girdle and lower limbs is normal or excessive. Most frequently, onset between 5 and 15 years of age. Most affected subjects are females and some show no other abnormality, but many develop glomerulonephritis, diabetes mellitus, hyperlipidaemia, and complement deficiency. Mental retardation in some cases. APL is a sporadic disorder of unknown aetiology.,function:Lamins are components of the nuclear lamina, a fibrous layer on the nucleoplasmic side of the inner nuclear membrane, which is thought to provide a framework for the nuclear envelope and may also interact with chromatin.,miscellaneous:The structural integrity of the lamina is s
Background	lamin B2(LMNB2) Homo sapiens This gene encodes a B type nuclear lamin. The nuclear lamina consists of a two-dimensional matrix of proteins located next



to the inner nuclear membrane. The lamin family of proteins make up the matrix and are highly conserved in evolution. During mitosis, the lamina matrix is reversibly disassembled as the lamin proteins are phosphorylated. Lamin proteins are thought to be involved in nuclear stability, chromatin structure and gene expression. Vertebrate lamins consist of two types, A and B. Mutations in this gene are associated with acquired partial lipodystrophy. [provided by RefSeq, May 2012],

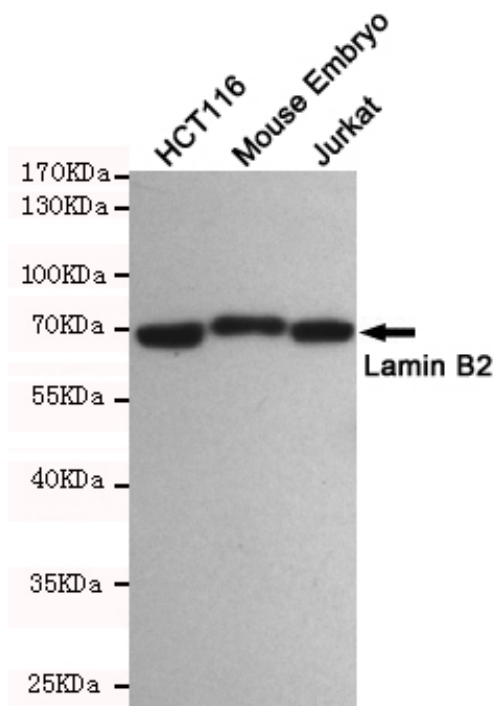
matters needing attention

Avoid repeated freezing and thawing!

Usage suggestions

This product can be used in immunological reaction related experiments. For more information, please consult technical personnel.

Products Images



Western blot detection of Lamin B2 in HCT116, Mouse Embryo and Jurkat cell lysates using Lamin B2 mouse mAb(dilution 1:500). Predicted band size: 68kDa. Observed band size: 68kDa.